



THE CHAMELEON COLLECTION

CHAMELEON CASEGOODS



DESCRIPTION

Chameleon Casegoods is a high-end modular system. Its wood modules can be combined to create different furniture items: bookcases, sideboards, consoles, nightstands, coffee tables, etc. It provides a wide array of customization options.

The modules are handcrafted by expert millworkers in the Antiques & Design workshop in Miami. Chameleon Casegoods are made in America. There is no extra delivery time nor cost for import orders. High quality materials and accessories are used in order to guarantee a high-end product.

STANDARD FINISHES

Natural and stained woods: ash, maple, walnut, ebony straight, zebrawood, ,white oak crown , white oak straight, gray stained oak and white stained wood.
Colored lacquers: 48 trendy colors. See enclosed chart. Sheen levels: matte, satin or high gloss.

PULLS OPTIONS

Please see enclosed chart.

LEGS OPTIONS

Chameleon Casegoods can be wall mounted. If legs are required , please see enclosed chart.

TOP OPTIONS

If a top is required, a wide range of top options is available:
Wood board - finished at your choice- natural , stained or painted
Natural stone (marble/granite) and quartz stone

CUSTOM ORDERS

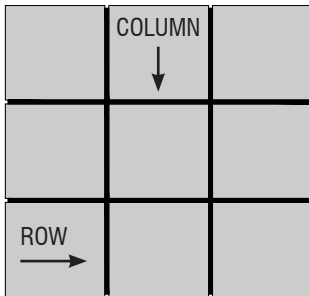
Custom veneers, stains or colors are available.
Custom selection of pulls, handles or legs can be installed.



THE CHAMELEON COLLECTION

CHAMELEON CASEGOODS

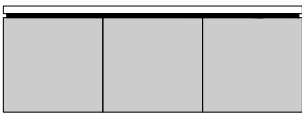
JOINTS



Vertical and horizontal 3/4" joints are required for modular configurations with two rows or more.

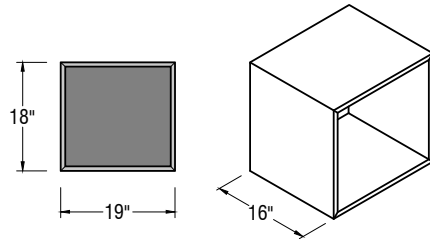


Vertical 3/4" joints are required for modular configuration of one row without top.

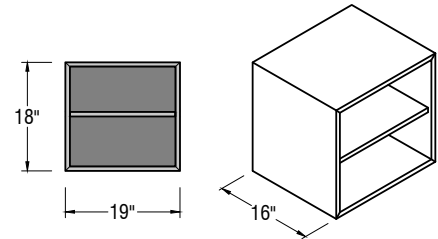


Horizontal 3/4" joint is required for modular configuration of one row with top.

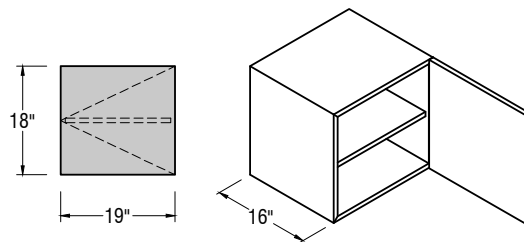
MODULES



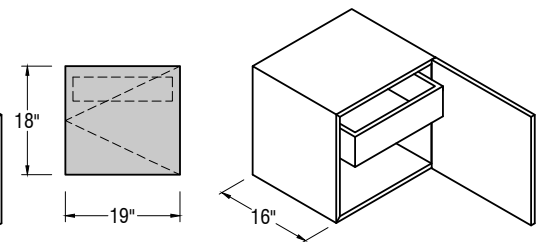
Cod. **OPEN**



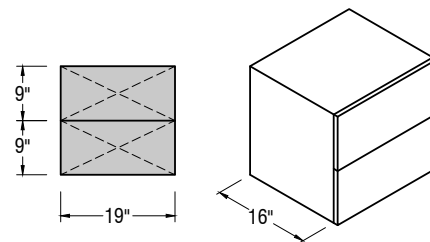
Cod. **SHELF**



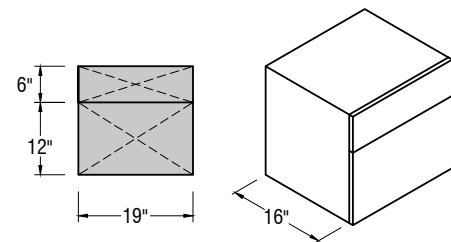
Cod. **DOOR-S**



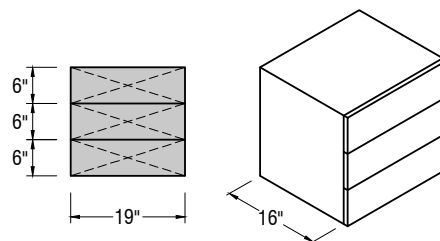
Cod. **DOOR-D**



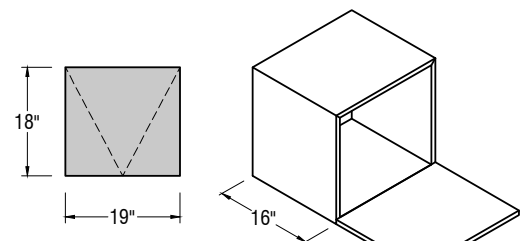
Cod. **2DWR**



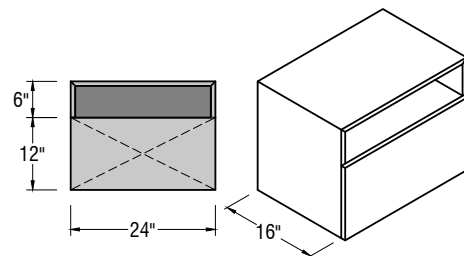
Cod. **2DWR-F**



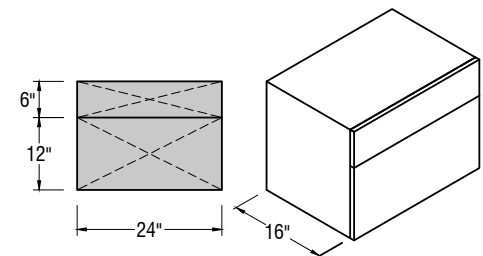
Cod. **3DWR**



Cod. **DWNFLAP**



Cod. **TVDWR**



Cod. **2DWR-FW**



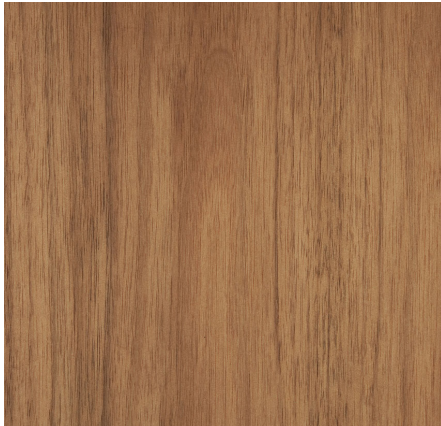
STANDARD FINISHES | NATURAL & STAINED WOODS



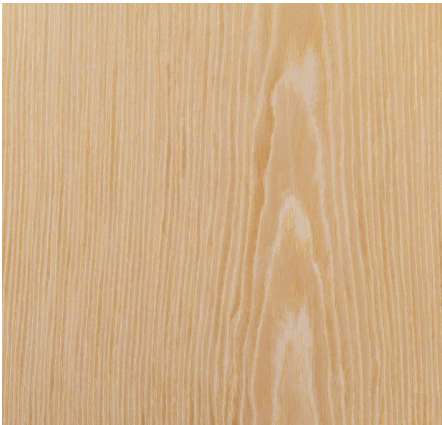
ASH



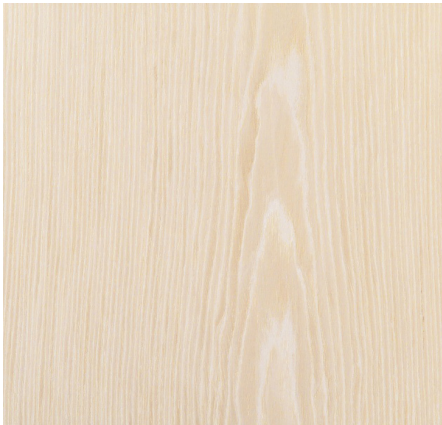
MAPLE



WALNUT



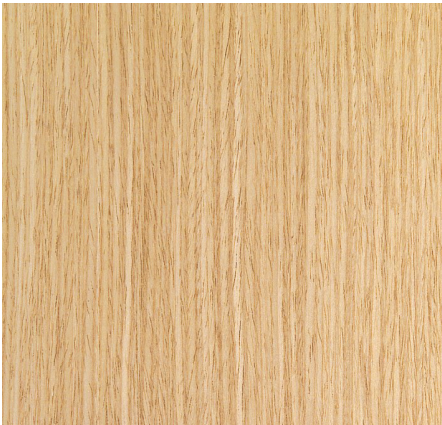
WHITE OAK CROWN



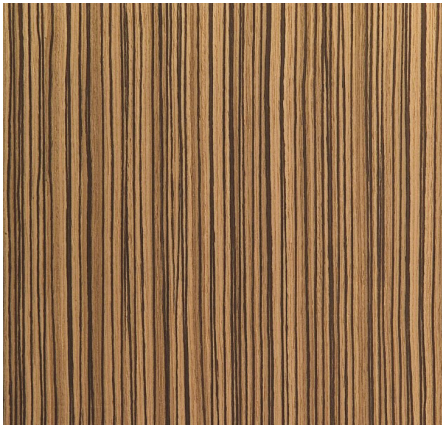
WHITE STAIN OAK



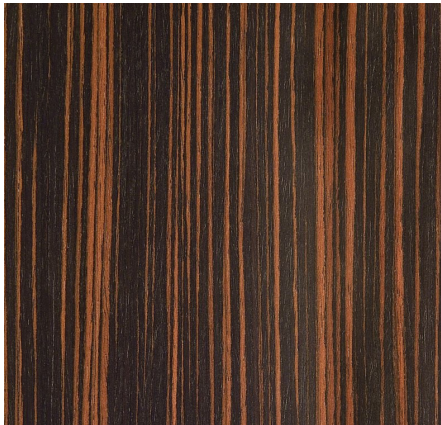
GREY STAIN OAK



WHITE OAK STRAIGHT



ZEBRAWOOD



EBONY STRAIGHT



STANDARD FINISHES | COLOR LACQUERS

BLACK	CHAMPAGNE	PATRIOT BLUE	KENTUCKY BLUE
DARK SHADOW	FROSTED ALMOND	BLUE GRAPHITE	TURKISH SEA
FROST GRAY	SAND	BIJOU BLUE	BLITHE
SILVER	NOUGAT	STONE BLUE	VIRIDIAN GREEN
SANDSHELL	TANNIN	STARLIGHT BLUE	ACQUA
BRIGHT WHITE	CAFE LIQUOR	BALLAD BLUE	GREEN BLUE SLATE
LUCITE GREEN	CANARY YELLOW	LUCITE GREEN	TEABERRY
SPRING BOUQUET	GOLDEN GLOW	CORAL	STRAWBERRY ICE
EMERALD	MELLOW YELLOW	HOT CORAL	POLIGNAC
RIFLE GREEN	NUGGET GOLD	RED ORANGE	GREY LILAC
MOSS STONE	INCA GOLD	AURORA RED	RADIANT ORCHID
GREEN BANANA	BAMBOO	CHILI PEPPER	GRAPE WINE



PULLS AND HANDLES



Cod. H-BLUM-TIPON

Magnetic touch latch by BLUM
No pulls or handles



Cod. H-RICHELIU-SQR HANDLE

By Richelieu
Finish: Stainless Steel
Dims: 4"L



Cod. H-RICHELIU-RECT HANDLE

By Richelieu
Finish: Stainless Steel
Dims: 6"L



Cod. H-LINNEA-SQR PULL

Indented square pull by Linnea
Finish: Polish Stainless Steel
Dims: 2-7/8"W



Cod. H-LINNEA-TUB PULL

Tubular pull by Linnea
Finish: Polish Stainless Steel
Dims: 2-7/8"W



Cod. H-HAFELE-EDGE PULL

By Hafele
Finish: Aluminum Chrome
Dims: 2.75"W



Cod. H-HAFELE-FINGER PULL

By Hafele
Finish: Polished Chrome
Dims: 1-1/8"W



Cod. H-LINNEA-EDGE PULL

By Linnea
Finish: Polish Stainless Steel
Dims: 1-1/8" to 3-1/8"W



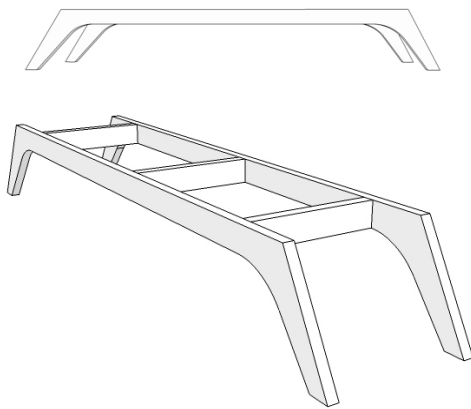
THE CHAMELEON COLLECTION

CHAMELEON CASEGOODS

CASEGOOD LEGS I

Cod. L-AD-WOOD LEGS

By Antiques & Design
Finish: Painted Wood
Dims: Variable



Cod. L-R-ALUM CLASSIC

By Richeliu
Finish: Polish Aluminum
Dims: 4", 6" & 9-3/8" H



Cod. L-FH-STAN CORNER

By Ferrous Hardware
Finish: Polished/Brushed Stainless
Dims: 1" square tube x
3", 4", 5", 6", 7", 8", 10" & 12" H



Cod. L-FH-STAN CENTER

By Ferrous Hardware
Finish: Polished/Brushed Stainless
Dims: 1" square tube x
3", 4", 5", 6" & 7" H



Cod. L-FH-ANGLE

By Ferrous Hardware
Finish: Polished Chrome or Brushed Nickel
Dims: 3/4" square tube x 9" H



Cod. L-B-FLAT STL

By Balasagun
Finish: Polished / Brushed Stainless
Dims: 15"W x 12"H



Cod. L-B-RECT STL

By Balasagun
Finish: Polished / Brushed Stainless
Dims: 14"W x 14"H or 16" x 16"



CASEGOOD LEGS II

Cod. L-FH-ALICE

By Ferrous Hardware

Finish: Polished/Brushed Stainless

Dims: 1-1/2" tube x

2", 3", 4" & 5"H



Cod. L-FH-ANTON

By Ferrous Hardware

Finish: Polished/Brushed Stainless

Dims: 2" tube x

2", 3", 4", 5" & 6"H



Cod. L-FH-ALCANDER

By Ferrous Hardware

Finish: Polished/Brushed Stainless

Dims: 1" tube x

2", 3", 4", 5", 6", 7", 8", 10" & 12"H



Cod. L-FH-ADAM

By Ferrous Hardware

Finish: Polished/Brushed Stainless

Dims: 1" tube x

2", 3", 4", 5", 6", 7", 8", 10" & 12"H



Cod. L-FH-QUATTRO

By Ferrous Hardware

Finish: Polished Chrome or Brushed Nickel

Dims: 4" x 4" x 6"H



Cod. L-FH-NELSON

By Ferrous Hardware

Finish: Polished Chrome or
Brushed Nickel

Dims: 5" & 9" H



Cod. L-FH-ASHLEY

By Ferrous Hardware

Finish: Polished Chrome or
Brushed Nickel

Dims: 3" x 3" x 6"H



Cod. L-FH-CLAIRE

By Ferrous Hardware

Finish: Polished Chrome or
Brushed Nickel

Dims: 2.75" x 5"H